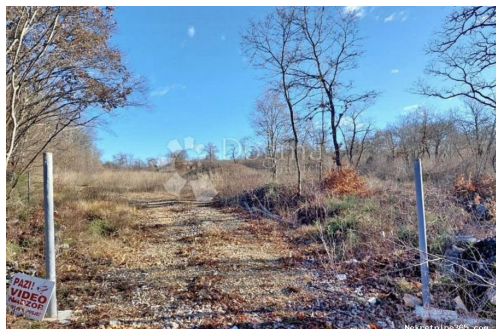


## Poljoprivredno zemljište u blizini Rovinja, Kanfanar, Land



### Seller Info

Name: Dogma Nekretnine  
First Name: Dogma  
Last Name: Nekretnine  
Company Name: Dogma nekretnine d.o.o.  
Service Type: Selling and renting  
Website: <https://dogma-nekretnine.com>  
Country: Croatia  
Region: Primorsko-goranska županija  
City: Rijeka  
ZIP code: 51000  
Address: F.LA GUARDIA 6  
Phone: +385 51 341 080  
Fax: +385 51 341 081  
About us: DOGMA nekretnine d.o.o. is an experienced and licensed agency specializing in real estate. We have been present in this business for more than 20 years - from a small agency with only two employees through many years of work and effort, we have grown into a company with over 80 employees. In that period, with our work and attitude towards clients and business, we became the leading agency in the Primorje-Gorski Kotar County and the leading in Croatia. The Agency currently operates at the following locations: headquarters in Rijeka, F. la Guardia.6, branch office within the Tower Center Rijeka, J.P.Kamova 81a (4th floor), branch office in Opatija, Maršala Tita 97, branch office in Labin, Ulica Slobode 3; branch office in Umag, Joakima Rakovca 4, branch office in Pula, Anticova 5 and in Zagreb,

Ulica grada Vukovara 284  
(Almeria building D). Our  
teams are at your disposal in all  
locations!

## Listing details

### Common

Title:	Poljoprivredno zemljište u blizini Rovinja
Property for:	Sale
Land type:	Agricultural land
Property area:	1437 m <sup>2</sup>
Price:	11,200.00 €
Updated:	Apr 15, 2024

### Location

Country:	Croatia
State/Region/Province:	Istarska županija
City:	Kanfanar
City area:	Sošići
ZIP code:	52352



### Permits

Ownership certificate:	yes
------------------------	-----

### Description

Description:	<p>One of the most "photogenic" towns in the Mediterranean is the former fishing and now tourist town of Rovinj-Rovigno. About 40 kilometers from Pula, Rovinj-Rovigno has long been known as a city whose climatic features have a favorable effect on health. Therefore, even today, this city and its citizens cherish a long tradition of maintaining the place and "fight" for the epithet "healthy city"... and nature does the rest. The entire coast, namely, along with twenty-two islands, is a protected natural heritage. In the vicinity of this beautiful city, only 8 km away, there is an agricultural land with a total square footage of 1437 m<sup>2</sup>. A macadam road (300m) leads to the land, which is maintained. Utilities are 300 m from the field itself. Galvanized posts have been placed around the plot and everything is ready to install a wire fence. The possibility of buying a complete plot of land with an area of 9300 m<sup>2</sup>. The documentation is in order. We are at your disposal for more information. ID CODE: IS1507243</p>
--------------	--------------------------------------------------------------------------------------------------------------------------------------------------------------------------------------------------------------------------------------------------------------------------------------------------------------------------------------------------------------------------------------------------------------------------------------------------------------------------------------------------------------------------------------------------------------------------------------------------------------------------------------------------------------------------------------------------------------------------------------------------------------------------------------------------------------------------------------------------------------------------------------------------------------------------------------------------------------------------------------------------------------------------------------------------------------------------------------

### Additional contact info

Reference Number:	462520
Agency ref id:	IS1507243