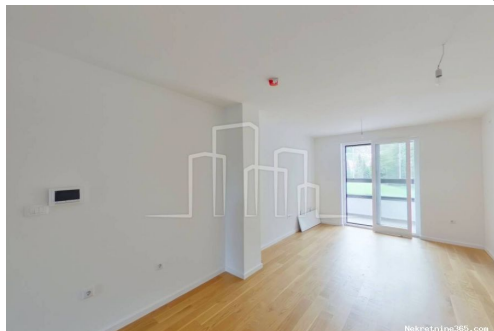


Apartman Lamela 2 dvosoban dvostrane orijentacije sa jednom spavaćom sobom dva balkona 52m2 Snježna dolina Resort Jahorina USELJIVO, Pale, Flat



Seller Info

Name: Hadis Kadić

First Name: Hadis

Last Name: Kadić

Company: Stanpromet d.o.o.

Name:

Service Type: Selling and renting

Website: <https://www.stanpromet.ba>

Country: Bosnia and Herzegovina

Region: Kanton Sarajevo

City: Novo Sarajevo

ZIP code: 71000

Address: Grbavicka, 8b

Mobile: 062830830

Phone: 033842555

About us: Agencija Stanpromet registrovana je za obavljanje posredovanja u procesu kupovine, prodaje i najma nekretnina.

Višegodišnje iskustvo dokazuje da smo pouzdan partner kojem su povjerenje i zadovoljstvo klijenata najveća inspiracija da budemo još bolji. Poslovanje zasnivamo na načelima transparentnosti, profesionalizma i stručnosti. Agencija Stanpromet pruža slijedeće usluge posredovanja u procesu:

Iznajmljivanja,
Kupovine i
Prodaje nekretnina.

Stanpromet je jedna od malobrojnih agencija koja nudi uslugu direktnog otkupa nekretnina.

Common

Title:	Apartment Lamela 2 dvosoban dvostrane orijentacije sa jednom spavaćom sobom dva balkona 52m2 Snježna dolina Resort Jahorina USELJIVO
Property for:	Sale
Property area:	52 m ²
Floor:	3
Number of Floors:	5
Bedrooms:	3
Bathrooms:	1
Price:	1.00 €
Updated:	Nov 17, 2023

Condition

Built:	2022
--------	------



Location

Country:	Bosnia and Herzegovina
State/Region/Province:	Republika Srpska
City:	Pale
ZIP code:	71423

Additional information

Elevator:	yes
Freight elevator:	yes
Energy efficiency:	A+

Parking

Garage:	yes
---------	-----

Description

Description:	Stanpromet.ba - real estate agency from its offer for sale exclusively announces the sale of a habitable apartment of two-sided orientation with a view of the trail, hotels in nature Lamela 2 (second closest to the trail) apartment 17 of 52m2 floor 3 trail Trnovo. The apartment building together with the neighboring buildings forms a pleasant architectural whole. The building is located on the right side of the planned Center of the apartment part of the Snježna dolina Resort. The apartment we present has an area of 52m2 overlooking the trail, the hotel and the evergreen forest, consists of a central entrance hall, spacious living room with separate kitchen and balcony, bedroom with balcony and bathroom. This
--------------	------------------------------------------------------------------------------------------------------------------------------------------------------------------------------------------------------------------------------------------------------------------------------------------------------------------------------------------------------------------------------------------------------------------------------------------------------------------------------------------------------------------------------------------------------------------------------------------------------------------------------------------------------------------------------------------------------------------------------------------------

apartment is located on 3 floors of 5 buildings which makes it ideal for future buyers who want to choose a floor. The apartment is two-sided orientation Lamela 2 complex Lamela is the second closest to the trail (50 meters to the six-seater). The apartment is finished and ready to move in. For all additional information as well as the date of the tour and presentation you can contact us. Next to the apartments are the design of the underground floor of the garage when it comes to parking space a sufficient number of parking spaces provided to owners and visitors with the option of renting designed on -1 underground floor of the Resort. Regarding the construction standard, we can point out the following: · First-class oak parquet, · Top Thermal insulation (Thermo block and wool) · Armored front door ZALMO, · Convector heating with Smart mobile app Androi and IOs NOBO, · Fully equipped bathrooms Materrazi tiles , Ariston Boiler, Grohe and Ideal standard sanitary ware. · Exterior carpentry combination Wood-Alu with double thermopane sound insulation and LOW-e ANSDRIVE glass. · Each apartment has a chimney for the Fireplace to complete the mountain pleasure! The resort itself through its two parts forms a complete whole, the first part of the apartment complex through 7 lamellas / buildings together with the second part of the Resort which includes a modern hotel part with all amenities modeled on the world's best ski resorts and destinations. This complex next to the 5 * hotel within the apartment complex you will be able to find everything you need for your perfect ambience as well as all the necessary things for relaxation and recreation: Restaurant, Cafe Bar, Hotel, Gym, Spa and Wellness, Swimming pool, Meeting rooms, Sauna, children's playrooms and much more. 30m from the resort there is a ski slope that is connected to other slopes and a ski lift with lighting, artificial snow system and a children's playground. Due to the attractive location and proximity of attractive facilities as an investment for rent in case the buyer wants to rent apartments to guests Snježna Dolina Resort is able to offer a complete service to buyers who want to rent the purchased apartment to guests. our Resort within its Hotel and operations offers a complete service for renting apartments to guests and tourists, which includes complete management (advertising, cleaning, cleaning, reception of guests in the apartments, farewell, payment) and all at a single fee of only 10%! And the remaining 90% in favor of the apartment owner. With this unique offer, we want to provide all our customers with a very fast and high-quality return on investment in our Resort through an excellent annual return on investment. At the link below you can see in detail our 360 ° virtual view of the apartment. Location: The apartment building is located on the right side of the mountain center near the ski slope. With an altitude of 1,595m, the location provides an ideal mountain atmosphere for all nature lovers and recreationists, both in winter and summer. Jahorina is covered with rich greenery in summer and up to 3 m high in winter. In the immediate vicinity of the building are located numerous sports and recreational facilities and hotel complexes, which greatly contribute to the complete atmosphere for which Jahorina is known. The apartments are only 25 km away from the center of Sarajevo, and since Jahorina is an Olympic mountain, it is well visited throughout the year, both by nature lovers and many tourists who come to enjoy the rest and recreation provided by this

Olympic beauty. Mountain atmosphere and ambience located where untouched nature dominates. Jahorina-Olympic beauty and the settlement of Obućina ponds in the immediate vicinity of the settlement of Šator. It is the micro-location of our and your Snow Valley! Stanpromet.ba - real estate agency Agent Hadis 062830830
ID CODE: 501622

Additional contact info

Reference Number: 539329

Agency ref id: 501622