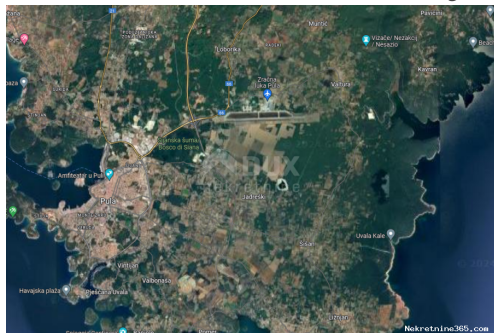


## PULA, VALTURA - GRAĐEVINSKO ZEMLJIŠTE 23.250 m2 - POSLOVNA ZONA, PRILIKA!!!, Ližnjan, Γη



### Πληροφορίες Πωλητή

Όνομα: Agencija Dux nekretnine  
Ηλεκτρονικό info@dux-nekretnine.hr  
Ταχυδρομείο:  
Όνομα: Agencija  
Επώνυμο: Dux nekretnine  
Όνομα: DUX NEKRETNINE d.o.o.  
Εταιρίας:  
Service Type: Selling and renting  
Χώρα: Croatia  
Region: Primorsko-goranska županija  
City: Rijeka  
Ταχυδρομικός 51000  
Κώδικας:  
Διεύθυνση: Tizianova 8  
Mobile: 385 91 480 8808  
Phone: 385 51 518 174  
Σχετικά με εμάς: Dux nekretnine agency operates with the aim of raising the quality of real estate brokerage to a higher level of professionalism and mutual satisfaction of the parties with which it cooperates. How do we do that? We approach each client humanely and professionally in order to facilitate one of the biggest and most important decisions in life - buying real estate. Our offer includes a wide range of high quality and very attractive properties in the Kvarner, Istria, islands and wider surroundings in order to satisfy the refined tastes of our longtime customers. The buying and selling process takes place at the highest level of quality with our reliability and commitment to each individual client. Our job is not

done until we see a smile on the faces of clients. And even then because we like to stay in touch even after the contract is signed - because our mission is more than just a job.

## Στοιχεία καταχώρησης

### Κοινά

Τίτλος:	PULA, VALTURA - GRAĐEVINSKO ZEMLJIŠTE 23.250 m2 - POSLOVNA ZONA, PRILIKA!!!
Ιδιοκτησία για:	Πώληση
Τύπου Land:	Κτίριο πολύ
Τετραγωνικά Πόδια:	23250 m <sup>2</sup>
Τιμή:	1,000,000.00 €
Δημοσιεύτηκε:	12.07.2024

### Τοποθεσία

Χώρα:	Croatia
Κράτος / Περιοχή /	Istarska županija
Επαρχία:	
Πόλη:	Ližnjan
Περιοχή Πόλη:	Valtura
Poštanski broj:	52204



### Άδειες

πιστοποιητικό ιδιοκτησίας:	όχι
----------------------------	-----

### Περιγραφή

Πρόσθετες πληροφορίες: PULA, VALTURA - GRAĐEVINSKO ZEMLJIŠTE 23.250 m2 - POSLOVNA ZONA, PRILIKA!!! Građevinsko zemljište površine 23.250 m2 ( poslovna zona ). Građevinsko zemljište ima pristupni put. Teren je konfiguracijski POTPUNO RAVAN. Sve komunalije do terena. Poštovani klijenti, agencijska provizija naplaćuje se u skladu s Općim uvjetima poslovanja: [www.dux-nekretnine.hr/opci-uvjeti-poslovanja](http://www.dux-nekretnine.hr/opci-uvjeti-poslovanja) ID KOD AGENCIJE: 27318

### Πρόσθετες πληροφορίες επαφής

Εσωτερικός αριθμός αναφοράς:	567657
Agency ref id:	27318