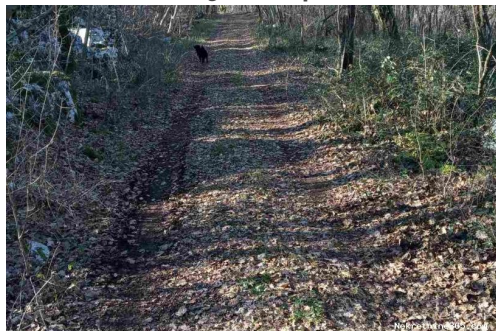


ISTRA, LABIN, ŠUMBER, POLJOPRIVREDNO ZEMLJIŠTE 48500 M2, Sveta Nedelja, Γη



Πληροφορίες Πωλητή

| | |
|---------------|--|
| Όνομα: | Re/Max Plus labin |
| Όνομα: | Re/Max |
| Επώνυμο: | Plus labin |
| Όνομα | Re/Max Plus Labin |
| Εταιρίας: | |
| Service Type: | Selling and renting |
| Πρόσθετο | mantika2013@gmail.com |
| Ηλεκτρονικό | |
| Ταχυδρομείο: | |
| Ιστοχώρος: | https://www.remax-plus.info |
| Χώρα: | Croatia |
| Region: | Istarska županija |
| City: | Labin |
| City area: | Labin |
| Ταχυδρομικός | 52220 |
| Κώδικας: | |
| Διεύθυνση: | Zelenice 7 |
| Phone: | +38552496062 |
| Σχετικά με | In the very center of Labin, on |
| εμάς: | Zelenice, Re/Max Plus Labin, a branch of the world's leading real estate agency, has been operating successfully for many years. |

Re/Max is the name of a real estate brokerage company founded in 1973 in Denver, USA. The name is an abbreviation of 'Real Estate Maximums', which confirms the founder's vision of achieving maximum results in work, cooperation, quality and profit. That they succeeded in this will be convinced by the data that in the past 46 years they have expanded their operations to 90 countries, so currently there are 7,000 offices around the world with 120,000

sales representatives, i.e.
agents.

There are 19 branches operating in Croatia, four of which are in Istria, and the Labin branch is achieving notable results in business.

The key factors that contribute to the success of Re/Max are that the office managers and sales representatives are motivated and professionally trained. Re/Max's sales representatives prepare a sales plan for each property, which they execute in cooperation with the client. Rea/Max's office in Labin promotes every real estate it has on offer, and they are also connected with other Remax offices in a certain area or in a certain country, thus attracting a much larger number of potential buyers than is the case in a traditional or independent way mediation in real estate business.

What makes the difference is the immediate, professional approach of the sales representatives (agents) of the Labin office, who continuously maintain contacts with sellers and buyers, who therefore feel respected and at the same time know that they and their real estate are being taken care of in a quality way.

Reg No.: 52/2014

Στοιχεία καταχώρησης

Κοινά

| | |
|--------------------|--|
| Τίτλος: | ISTRA,LABIN, ŠUMBER, POLJOPRIVREDNO ZEMLJIŠTE 48500 M2 |
| Ιδιοκτησία για: | Πώληση |
| Τύπου Land: | Η γεωργική γη |
| Τετραγωνικά Πόδια: | 48524 m ² |
| Τιμή: | 121,310.00 € |
| Δημοσιεύτηκε: | 21.06.2024 |

Τοποθεσία

| | |
|--------------------|-------------------|
| Χώρα: | Croatia |
| Κράτος / Περιοχή / | Istarska županija |
| Επαρχία: | |
| Πόλη: | Sveta Nedelja |
| Περιοχή Πόλη: | Šumber |
| Poštanski broj: | 52220 |



Περιγραφή

Πρόσθετες πληροφορίες: ISTRALABIN, ŠUMBER, POLJOPRIVREDNO ZEMLJIŠTE 48500 M2
Zemljište je ukupne površine 48.524 M2, 6 parcela koje su spojene u jednu cjelinu i ograđene su. Pravilnog je oblika i uređenog pristupa. Vodovod prolazi pri rubu parcele. Nekada je zemlja većim djelom obrađivana, no kako se već dugi niz godina ne koristi, tlo je sada bogatije humusom i ekološki čisto. Na terenu se trenutno nalazi lijepi broj stabala. ID KOD AGENCIJE: 300291006-376

Πρόσθετες πληροφορίες επαφής

| | |
|--------------------|------------------|
| Εσωτερικός αριθμός | 618642 |
| αναφοράς: | |
| Agency ref id: | 300291006-376 |
| ΤΗΛΕΦΩΝΟ | 00385 98 434 869 |
| ΕΠΙΚΟΙΝΩΝΙΑΣ: | |